

**Athlete Guide for SoCalCross SCPS #9: SLO Cross @ El Chorro Regional Park  
Saturday 11/9/2019 - San Luis Obispo!**



**Event:** SoCalCross SCPS #9: SLO Cross Saturday - San Luis Obispo

**Date:** Saturday, 11/9/2019 - 9AM-4PM

**Location/Address:** [El Chorro Regional Park, CA-1, San Luis Obispo, CA 93408](#)

**USA Cycling:** Held Under USAC Permit #2019-3193

**Sponsor Club:** The TEAM SoCalCross

**SoCalCross Race Director =** Dorothy Wong 626-622-2595 [Dot@SoCalCross.org](mailto:Dot@SoCalCross.org)

**SLO Race Director =** Kelly Knox = [kelly13knox@gmail.com](mailto:kelly13knox@gmail.com)

**SLO Registration Coordinator =** Jaime Jones [imonpointe@gmail.com](mailto:imonpointe@gmail.com)

**SLO Course Director =** Brad Buxton

**Race schedule:** Race 9AM-4PM [Download Race Schedule HERE](#)

**Registration Details:**

- Online registration at [www.socalcross.org/register](http://www.socalcross.org/register) or [www.BikeReg.com/SLOCross](http://www.BikeReg.com/SLOCross) (Closes at 5PM, Friday, November 8th)
- Race Day Registration is available at: Opens 7:30AM and closes 15min prior to each race start.

**Medical Support:** EMT on Site Jeremy Aranda, 805-459-7683

**Nearest Emergency Hospital:** Sierra Vista Regional Medical Center

**Address:** 1010 Murray Ave, San Luis Obispo, CA 93405 **Phone:** (805) 546-7600

**Thank you to our sponsors:** Voler Apparel, Pocrass & de los Reyes, RideCX.com, Union Sport, Sock Guy, ODI Grips, Castex Hollywood Rentals, Clif Bar, Whalebird Kombucha and our promotional partners: SoCalCycling.com, Monster Media, CenterLineRule.blogspot

**Athlete Guide for SoCalCross SCPS #9: SLO Cross @ El Chorro Regional Park  
Saturday 11/9/2019 - San Luis Obispo!**

This is a USA Cycling Sanctioned event. Read details below:



**SCPS 9 - SATURDAY 11/9 USAC-SCNCA Rules & Requirements:**

**Get your rankings points for CX Nationals - best of 5 races is your rankings.**

**Held Under USAC Permit #2019-3193**

- All USAC Rules Apply
- Event Held rain or shine
- 100 rider field limit per race wave.
- Entry fee includes USAC insurance and USAC LA (SCNCA) surcharges
- USAC Release waiver must be signed by all racers or parent/legal guardian for anyone 18yrs or younger
- Results will be posted immediately after each race and awards after a 15 minutes protest period. Make sure to check your results immediately after each race.
- [Click here](#) for details on USAC ranking points calculation.
- USAC Insurance Per Rider Charge: \$4.00/day
- SCNCA Per Rider Surcharge: \$0.50/day, except Jr/College/Second Race Discount

**A USA CYCLING LICENSE IS REQUIRED.**

A USA Cycling race, which means you must have a USAC license in order to participate. If you haven't purchased/renewed your license already, USAC is offering a 2019/2020 bundle at a discounted rate of \$130: [Click here](#) to purchase online.

- **USAC One-day Beginner's license:** \$10/day, only for Category 5 Men, Women or Juniors. Can be purchased online at [www.usacycling.org/events/?state=CA](http://www.usacycling.org/events/?state=CA), select appropriate event, and then click on "Purchase One-Day License." Bring it receipt to race. USAC One-day Experienced license: \$25/day, available to all former USAC Category 1-4 racers. Must be purchased online, prior to event. [Click here](#) for details on one-day licenses.

**Athlete Guide for SoCalCross SCPS #9: SLO Cross @ El Chorro Regional Park  
Saturday 11/9/2019 - San Luis Obispo!**

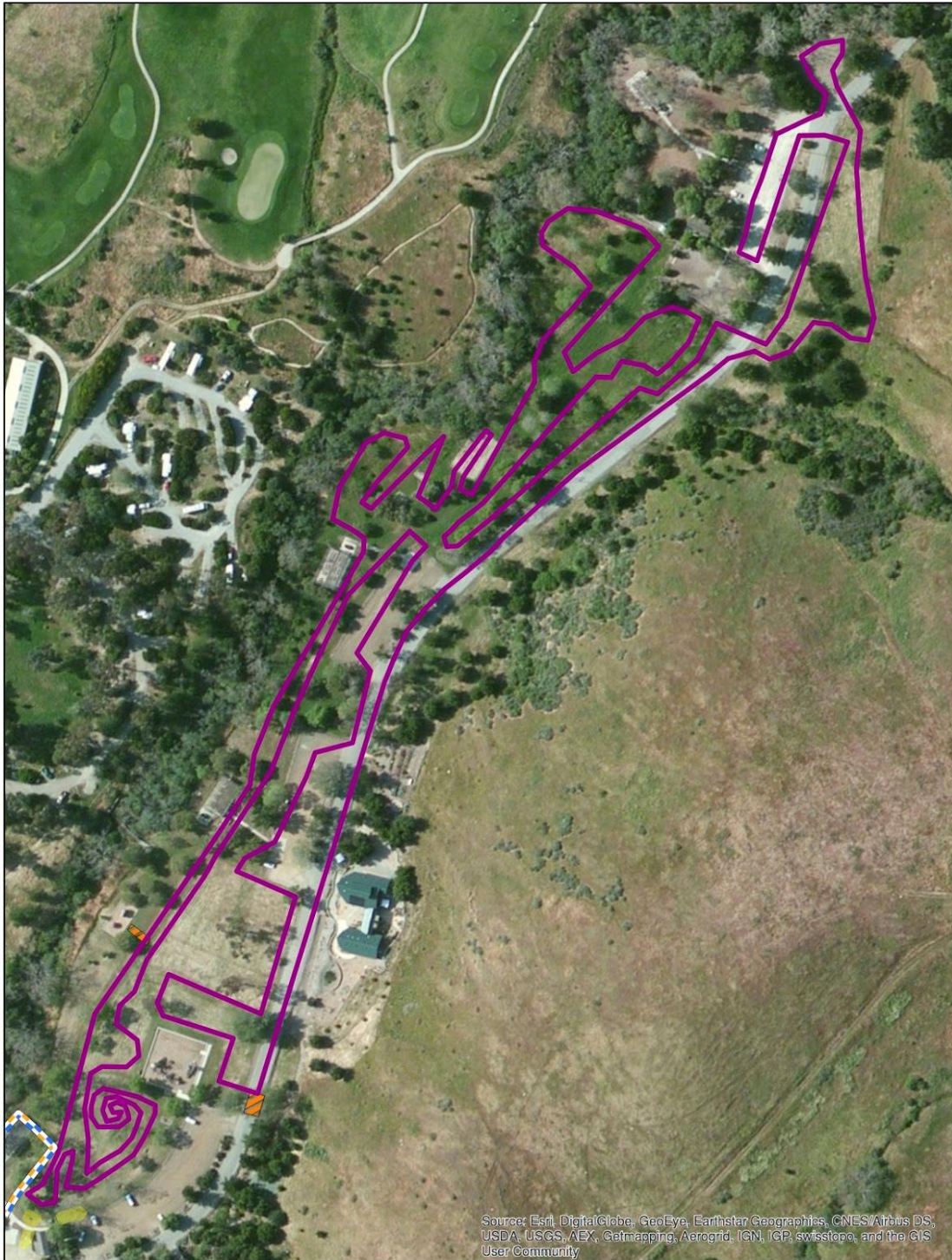
RACE SCHEDULE: [Download Race Schedule HERE](#)

<b>SLOCross 2019 Race Schedule</b>						
Wave	Start Time	Category		Duration	Awards	Online Entry Fee / Race Day add \$5 / 2nd Race \$10 after higher entry is paid
1	9:00 AM	FIRST TIMER RACE		1 lap	Top 3 - Awards	\$10
	9:02 AM	Jr Men 15-18	OPEN	30 minutes	Top 3 - Awards	FREE
	9:02 AM	Jr Women 15-18	OPEN	30 minutes	Top 3 - Awards	FREE
	9:03 AM	Jr Men 9-14	OPEN	30 minutes	Top 3 - Awards	FREE
	9:03 AM	Jr Women 9-14	OPEN	30 minutes	Top 3 - Awards	FREE
	9:03 AM	Youth Boys and Girls 6-9		1 lap	Top 3 - Awards/Cat	FREE
2	10:00 AM	Master Men 35+ 3/4/5	B	40 minutes	Top 5 - Prizes	\$40
	10:00 AM	Master Men 45+ 3/4/5	B	40 minutes	Top 5 - Prizes	\$40
	10:01 AM	Master Women 35+/45+/55+	OPEN	40 minutes	Top 5 - Prizes/Cat	\$40
3	11:00 AM	Master Men 55+/65+/70+ 1-5	OPEN	40 minutes	Top 5 - Prizes/Cat	\$40
	11:01 AM	Master Men 35+ 4/5	C	40 minutes	Top 5 - Prizes	\$40
4	12:00 PM	Elite Women 1-5	A	40 minutes	Top 6 - \$300	\$40
	12:00 PM	Women 3/4/5	B	40 minutes	Top 5 - Prizes	\$40
	12:01 PM	Women 5 Beginner	C	40 minutes	Top 5 - Awards	\$30
5	1:00 PM	Master Men 35+ 1-5	A	45 minutes	Top 5 - Prizes	\$40
	1:00 PM	Master Men 45+ 1-5	A	45 minutes	Top 5 - Prizes	\$40
	1:01 PM	Cat 3/4/5 Men	B	45 minutes	Top 5 - Prizes	\$40
1	1:55 PM	<b>INTERMISSION - KIDS RACE</b>		<b>1 short lap</b>		
6	2:05 PM	Single Speed Men 1-5	A	40 minutes	Top 5 - Prizes	\$40
	2:05 PM	Single Speed Men 3/4/5	B	40 minutes	Top 5 - Prizes	\$40
	2:05 PM	Single Speed Women	OPEN	40 minutes	Top 5 - Prizes	\$40
	2:06 PM	Cat 4/5 Men	C	40 minutes	Top 5 - Awards	\$30
	2:06 PM	Collegiate Men/Women	OPEN	40 minutes	Top 5 - Awards/Cat	\$30
7	3:00 PM	Elite Men 1-4 / U23 Men 1-5	A/U23	60 minutes	Top 6 - \$300 Overall Top 3 U23- Prizes	\$40 / \$30 U23



**Athlete Guide for SoCalCross SCPS #9: SLO Cross @ El Chorro Regional Park  
Saturday 11/9/2019 - San Luis Obispo!**

**Course Description:** All races will compete on the cyclo-cross course that is approximately 2.5-3.5km in length. Surfaces hard pack and loose dirt, sand, grass and pavement. Obstacles, sand pit and a double barrier discount/bunny hop section.



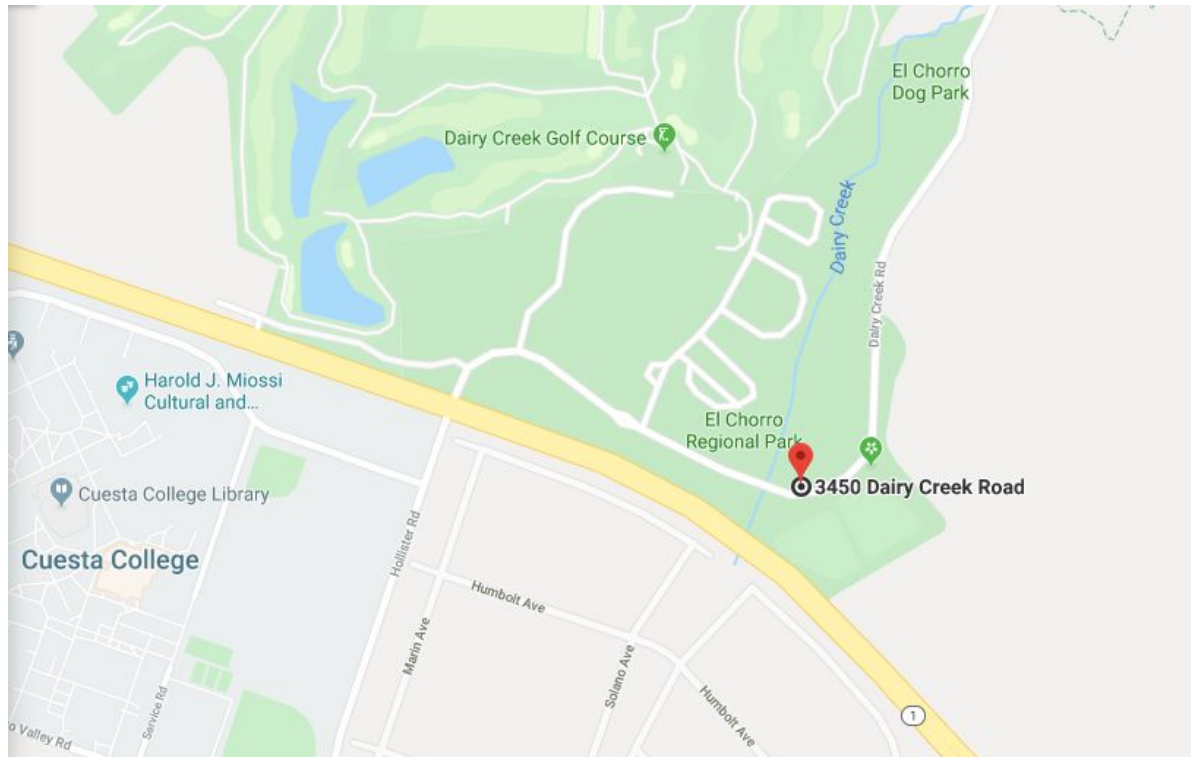
Source: Esri, DigitalGlobe, GeoEye, Earthstar Geographics, CNES/Airbus DS, USDA, USGS, AEX, Getmapping, Aerogrid, IGN, IGP, swisstopo, and the GIS User Community

## Athlete Guide for SoCalCross SCPS #9: SLO Cross @ El Chorro Regional Park Saturday 11/9/2019 - San Luis Obispo!

Location/Address: [El Chorro Regional Park, CA-1, San Luis Obispo, CA 93408](#)

**Directions** to El Chorro Regional Park

Enter off Hwy 1, San Luis Obispo. Drive down into lower parking lot near baseball fields.



**Camping on site at El Chorro Regional Park**

<https://reservations.slocountyparks.com/reservation/camping/>

Overflow camping may become available if reserved spots fill up.

Nearby Hotel Lodging Options:

- [Lamplighter Inn & Suites](#)
- [Sunbeam Motel](#)
- [Best Western Plus Royal Oak Hotel](#)
- [Motel 6 - North or South](#)

Plus Pismo Beach is a great ocean view alternative!